

Signify Classified - Internal
Cooper Lighting Solutions Photometric Lab
1121 Highway 74 South
Peachtree City, GA 30269



Scaled data based on original data using
LM-79-2019 Approved Method: Electrical and Photometric Measurements of Solid-
State Lighting Products

Test Report Prepared for

Cooper Lighting Solutions

Brand: McGRAW-EDISON

Report Number: P637874

Luminaire Tested: GWS-SA4D-760-U-SLL-W-GRSBK

Issue Date: 1/10/2023

Test Information

Test Method: LM-79-2019
Report Number: P637874
TEST IS SCALED FROM IESNA LM-79-08 TEST DATA (G2-2209-782-38)
Test Lab: COOPER LIGHTING SOLUTIONS
Issue Date: 1/10/2023
Manufacturer: COOPER LIGHTING SOLUTIONS
Product Line: McGRAW-EDISON
Catalog Number: GWS-SA4D-760-U-SLL-W-GRSBK
Description: GALLEON WALL SLIM LUMINAIRE. (4) LIGHTSQUARES WITH 16 LEDS EACH AND SPILL LIGHT ELIMINATOR LEFT OPTICS W/ FACTORY INSTALLED GLARE SHIELD, BK
Light Source: (64) 5700K CCT, 70 CRI LEDS
Ballast/Driver: -

Summary

Lumens per Lamp: N/A
Luminaire Lumens: 13248.3 lumens
Efficiency: N/A
Efficacy: 81.7 lumens/watt
Luminous Opening: Rectangular (W 1' x L: 1' x H: 0')
IES Classification: Type III - Short
BUG Rating: B2 - U0 - G2

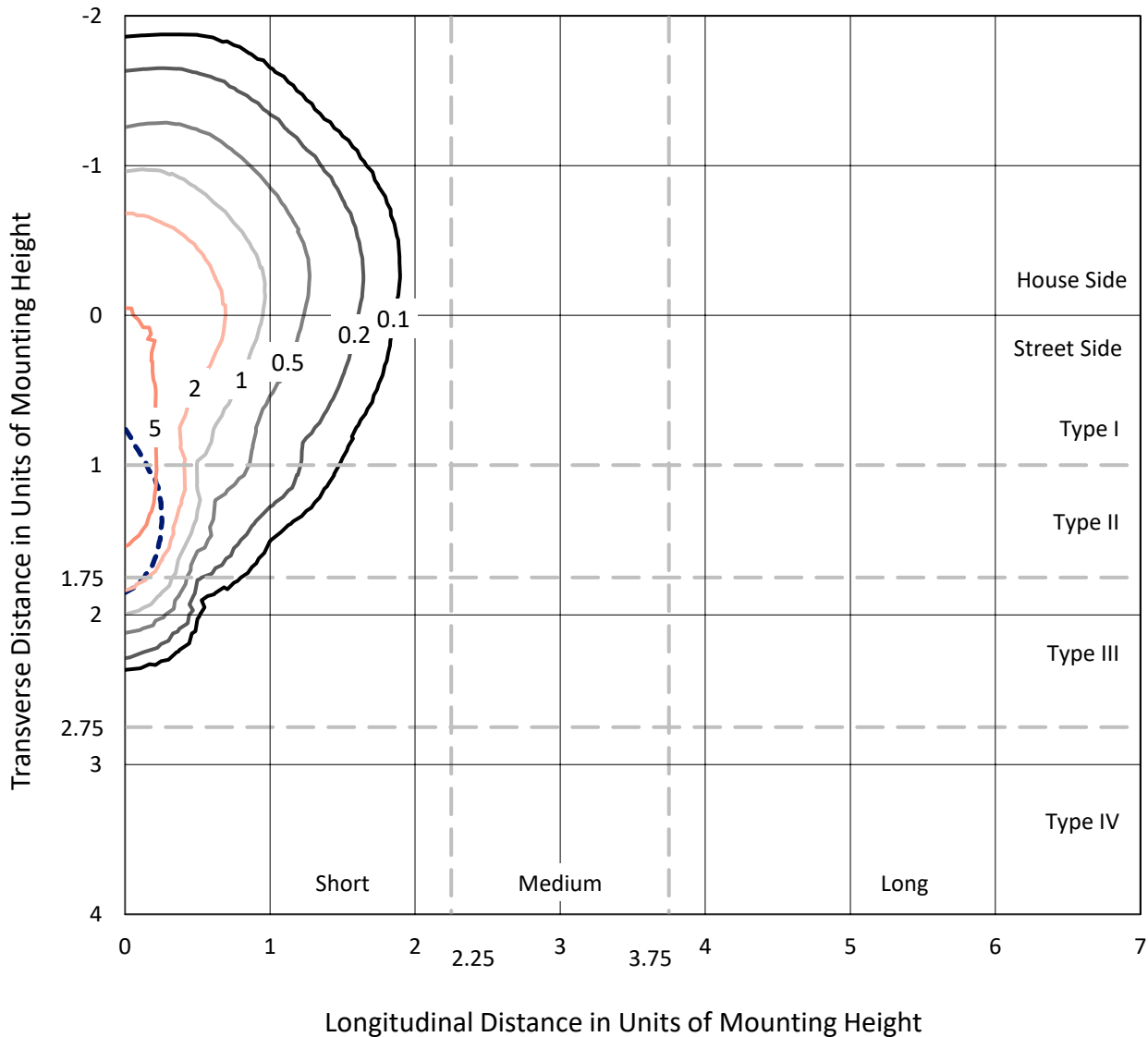
Input Watts (W): 162.1
Input Voltage (V): 120
Input Current (Ain): NR
Voltage Rise (V): NR
Power Factor: NR
Total Harmonic Distortion (THDi): NR
Frequency (hertz): 0
Stabilization Time: NR
Operation Time: NR
Ambient Temperature (°C): NR
Test Distance: 28.75 FT



REPORT NUMBER: P637874
 CATALOG NUMBER: GWS-SA4D-760-U-SLL-W-GRSBK

Iso-Footcandle Lines of Horizontal Illumination

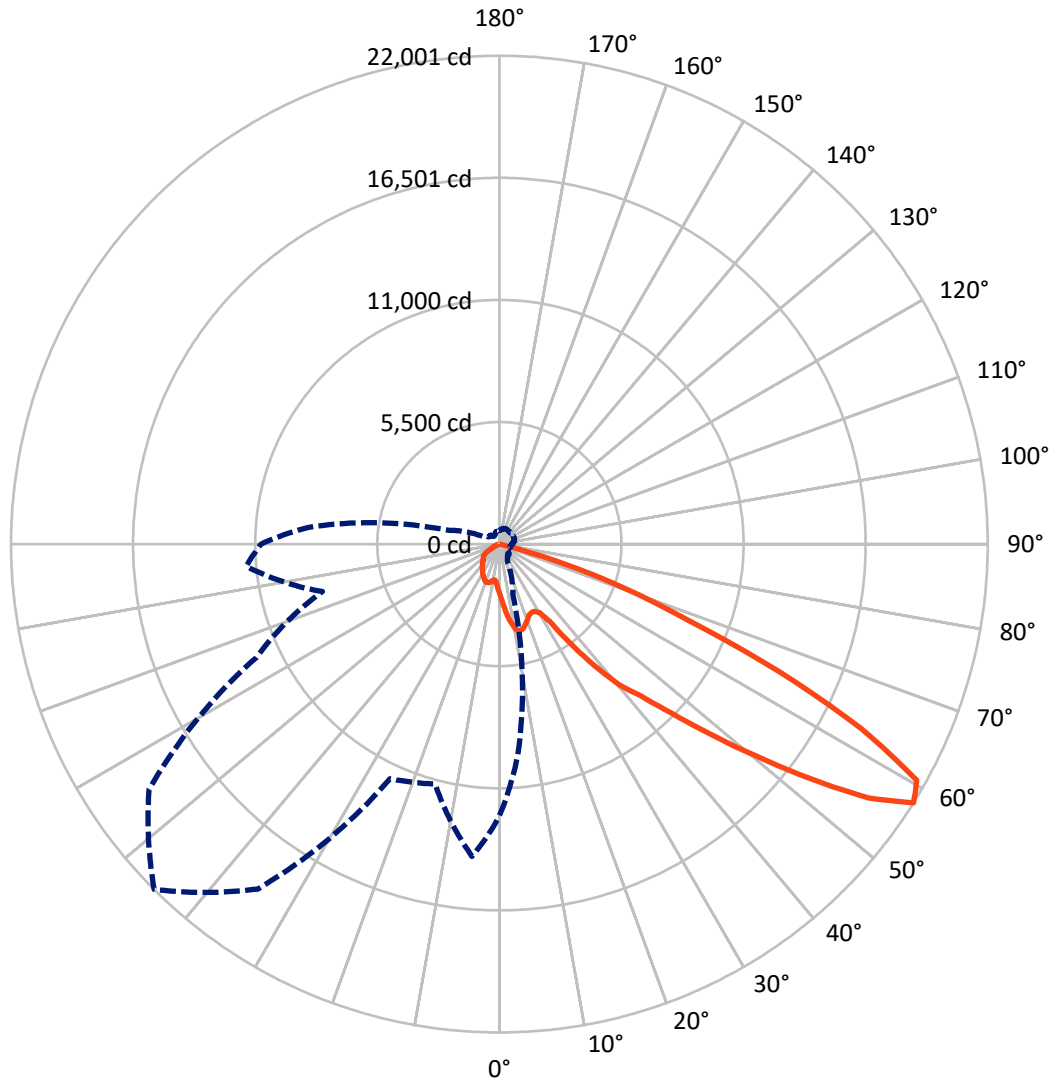
× Max cd
 - - - 1/2 Max cd



Based on 20 foot mounting height. Maximum calculated value = 8.8 fc
 Type III - Short - N/A

REPORT NUMBER: P637874
CATALOG NUMBER: GWS-SA4D-760-U-SLL-W-GRSBK

Luminous Intensity Polar Plot



— Vertical Plane Through 315-Deg Lateral - - - Horizontal Cone Through 57.5-Deg Vertical

REPORT NUMBER: P637874

CATALOG NUMBER: GWS-SA4D-760-U-SLL-W-GRSBK

FLUX DISTRIBUTION:

| | | Downward | Upward | Total |
|--------------------|-----------|----------|--------|---------|
| House Side | Lumens | 2854.1 | 0.0 | 2854.1 |
| | % Fixture | 21.5 | 0.0 | 21.5 |
| Street Side | Lumens | 10394.2 | 0.0 | 10394.2 |
| | % Fixture | 78.5 | 0.0 | 78.5 |
| Total | Lumens | 13248.3 | 0.0 | 13248.3 |
| | % Fixture | 100.0 | 0.0 | 100.0 |

ZONAL LUMENS:

| Zone | Lumens | % Fixture |
|-----------|---------|-----------|
| 0°-10° | 222.5 | 1.7 |
| 10°-20° | 732.1 | 5.5 |
| 20°-30° | 1188.1 | 9.0 |
| 30°-40° | 1823.5 | 13.8 |
| 40°-50° | 2912.3 | 22.0 |
| 50°-60° | 4077.7 | 30.8 |
| 60°-70° | 2090.8 | 15.8 |
| 70°-80° | 201.3 | 1.5 |
| 80°-90° | 0.0 | 0.0 |
| 90°-100° | 0.0 | 0.0 |
| 100°-110° | 0.0 | 0.0 |
| 110°-120° | 0.0 | 0.0 |
| 120°-130° | 0.0 | 0.0 |
| 130°-140° | 0.0 | 0.0 |
| 140°-150° | 0.0 | 0.0 |
| 150°-160° | 0.0 | 0.0 |
| 160°-170° | 0.0 | 0.0 |
| 170°-180° | 0.0 | 0.0 |
| 0°-90° | 13248.3 | 100.0 |
| 0°-180° | 13248.3 | 100.0 |

Coefficient of Utilization



REPORT NUMBER: P637874

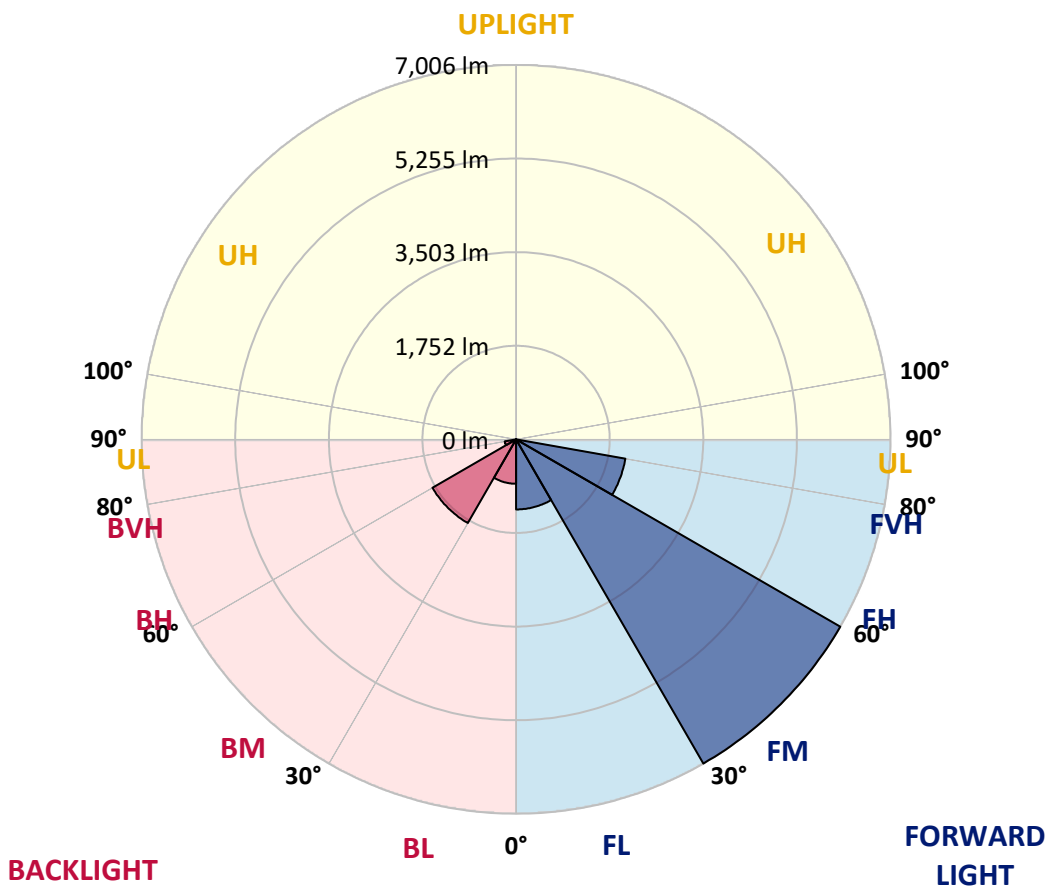
CATALOG NUMBER: GWS-SA4D-760-U-SLL-W-GRSBK

LUMINAIRE CLASSIFICATION SYSTEM LUMEN TABLE AND BUG RATING:

| Zone | Lumens | % Fixture | Zone Rating/Lumen Limit | | |
|----------------|--------|-----------|-------------------------|------|---------|
| | | | B | U | G |
| FL (0°-30°) | 1311.7 | 9.9 | | | |
| FM (30°-60°) | 7006.0 | 52.9 | | | |
| FH (60°-80°) | 2076.5 | 15.7 | | | G2/5000 |
| FVH (80°-90°) | 0.0 | 0.0 | | | G0/10 |
| BL (0°-30°) | 831.1 | 6.3 | B2/1000 | | |
| BM (30°-60°) | 1807.5 | 13.6 | B2/2500 | | |
| BH (60°-80°) | 215.6 | 1.6 | B1/500 | | G1/500 |
| BVH (80°-90°) | 0.0 | 0.0 | | | G0/10 |
| UL (90°-100°) | 0.0 | 0.0 | | U0/0 | |
| UH (100°-180°) | 0.0 | 0.0 | | U0/0 | |

BUG Rating: B2-U0-G2

Type III Short





REPORT NUMBER: P637874

CATALOG NUMBER: GWS-SA4D-760-U-SLL-W-GRSBK

CANDELA DISTRIBUTION (FULL):

| | 0° | 1° | 5° | 15° | 25° | 35° | 45° | 55° | 65° | 75° | 85° |
|-------|---------|---------|---------|--------|--------|--------|--------|--------|--------|--------|--------|
| 0° | 2251.1 | 2251.1 | 2251.1 | 2251.1 | 2251.1 | 2251.1 | 2251.1 | 2251.1 | 2251.1 | 2251.1 | 2251.1 |
| 2.5° | 2500.8 | 2495.5 | 2477.8 | 2417.6 | 2380.4 | 2321.9 | 2279.4 | 2224.5 | 2164.3 | 2127.1 | 2089.9 |
| 5° | 2766.5 | 2752.3 | 2704.5 | 2566.3 | 2460.1 | 2345.0 | 2252.9 | 2151.9 | 2043.9 | 1973.0 | 1907.5 |
| 7.5° | 3021.5 | 3000.3 | 2936.5 | 2702.7 | 2541.5 | 2376.8 | 2245.8 | 2098.8 | 1946.5 | 1840.2 | 1758.7 |
| 10° | 3271.2 | 3223.4 | 3122.5 | 2835.5 | 2617.7 | 2419.3 | 2265.3 | 2097.0 | 1918.1 | 1783.5 | 1693.2 |
| 12.5° | 3476.7 | 3441.3 | 3303.1 | 2961.3 | 2681.5 | 2428.2 | 2238.7 | 2082.8 | 1962.4 | 1872.1 | 1788.8 |
| 15° | 3653.8 | 3614.8 | 3483.8 | 3074.6 | 2736.4 | 2392.8 | 2127.1 | 1990.7 | 2010.2 | 2045.6 | 1974.8 |
| 17.5° | 3816.7 | 3776.0 | 3634.3 | 3168.5 | 2757.6 | 2306.0 | 1971.2 | 1905.7 | 2013.8 | 2146.6 | 2120.0 |
| 20° | 3985.0 | 3939.0 | 3765.4 | 3244.7 | 2750.5 | 2169.6 | 1813.6 | 1833.1 | 1985.4 | 2137.7 | 2151.9 |
| 22.5° | 4181.6 | 4133.8 | 3931.9 | 3342.1 | 2745.2 | 2006.7 | 1677.2 | 1769.3 | 1932.3 | 2061.6 | 2086.4 |
| 25° | 4441.9 | 4385.3 | 4163.9 | 3485.5 | 2759.4 | 1857.9 | 1579.8 | 1707.4 | 1842.0 | 1958.8 | 1973.0 |
| 27.5° | 4785.5 | 4712.9 | 4431.3 | 3662.7 | 2789.5 | 1741.0 | 1537.3 | 1622.3 | 1726.8 | 1831.3 | 1843.7 |
| 30° | 5233.6 | 5141.5 | 4737.7 | 3816.7 | 2775.3 | 1659.5 | 1509.0 | 1537.3 | 1599.3 | 1684.3 | 1686.1 |
| 32.5° | 5757.9 | 5632.1 | 5081.3 | 3949.6 | 2653.1 | 1599.3 | 1470.0 | 1450.5 | 1464.7 | 1530.2 | 1542.6 |
| 35° | 6374.2 | 6211.3 | 5460.3 | 4075.3 | 2430.0 | 1482.4 | 1399.2 | 1333.6 | 1328.3 | 1360.2 | 1390.3 |
| 37.5° | 7080.9 | 6886.1 | 5938.5 | 4236.5 | 2166.1 | 1360.2 | 1294.7 | 1229.2 | 1200.8 | 1216.8 | 1262.8 |
| 40° | 7732.7 | 7516.6 | 6438.0 | 4431.3 | 1896.9 | 1250.4 | 1172.5 | 1105.2 | 1071.5 | 1076.8 | 1133.5 |
| 42.5° | 8497.8 | 8274.6 | 7049.0 | 4686.4 | 1673.7 | 1176.0 | 1045.0 | 975.9 | 931.6 | 956.4 | 1021.9 |
| 45° | 9659.6 | 9406.4 | 7939.9 | 4907.7 | 1496.6 | 1158.3 | 933.4 | 836.0 | 814.7 | 857.2 | 935.1 |
| 47.5° | 11246.6 | 10936.6 | 9163.7 | 5042.4 | 1346.0 | 1174.2 | 855.4 | 722.6 | 727.9 | 775.7 | 853.7 |
| 50° | 12821.1 | 12486.3 | 10578.8 | 4865.2 | 1222.1 | 1142.4 | 816.5 | 634.1 | 667.7 | 710.2 | 781.1 |
| 52.5° | 13903.2 | 13467.5 | 11267.8 | 4353.4 | 1108.7 | 1021.9 | 812.9 | 550.8 | 614.6 | 628.7 | 689.0 |
| 55° | 13945.7 | 13409.1 | 10915.4 | 3432.4 | 954.6 | 862.5 | 775.7 | 481.7 | 556.1 | 561.4 | 612.8 |
| 57.5° | 12224.2 | 11738.9 | 9539.2 | 2357.3 | 848.4 | 632.3 | 618.1 | 421.5 | 456.9 | 501.2 | 533.1 |
| 60° | 9300.1 | 8887.4 | 7134.0 | 1080.4 | 644.7 | 402.0 | 423.3 | 363.1 | 341.8 | 407.4 | 439.2 |
| 62.5° | 5695.9 | 5432.0 | 4279.0 | 478.2 | 410.9 | 214.3 | 256.8 | 288.7 | 256.8 | 281.6 | 308.2 |
| 65° | 2261.7 | 2144.8 | 1624.1 | 203.7 | 168.3 | 108.0 | 116.9 | 168.3 | 180.7 | 198.4 | 223.2 |
| 67.5° | 393.2 | 371.9 | 272.8 | 90.3 | 69.1 | 65.5 | 56.7 | 77.9 | 109.8 | 122.2 | 141.7 |
| 70° | 51.4 | 49.6 | 44.3 | 37.2 | 35.4 | 31.9 | 24.8 | 49.6 | 74.4 | 77.9 | 90.3 |
| 72.5° | 12.4 | 10.6 | 10.6 | 8.9 | 10.6 | 3.5 | 3.5 | 26.6 | 53.1 | 54.9 | 63.8 |
| 75° | 0.0 | 0.0 | 0.0 | 0.0 | 0.0 | 0.0 | 0.0 | 8.9 | 33.7 | 37.2 | 44.3 |
| 77.5° | 0.0 | 0.0 | 0.0 | 0.0 | 0.0 | 0.0 | 0.0 | 0.0 | 0.0 | 0.0 | 1.8 |
| 80° | 0.0 | 0.0 | 0.0 | 0.0 | 0.0 | 0.0 | 0.0 | 0.0 | 0.0 | 0.0 | 0.0 |
| 82.5° | 0.0 | 0.0 | 0.0 | 0.0 | 0.0 | 0.0 | 0.0 | 0.0 | 0.0 | 0.0 | 0.0 |
| 85° | 0.0 | 0.0 | 0.0 | 0.0 | 0.0 | 0.0 | 0.0 | 0.0 | 0.0 | 0.0 | 0.0 |
| 87.5° | 0.0 | 0.0 | 0.0 | 0.0 | 0.0 | 0.0 | 0.0 | 0.0 | 0.0 | 0.0 | 0.0 |
| 90° | 0.0 | 0.0 | 0.0 | 0.0 | 0.0 | 0.0 | 0.0 | 0.0 | 0.0 | 0.0 | 0.0 |



REPORT NUMBER: P637874
 CATALOG NUMBER: GWS-SA4D-760-U-SLL-W-GRSBK

CANDELA DISTRIBUTION (continued):

| | 90° | 95° | 105° | 115° | 125° | 135° | 145° | 155° | 165° | 175° | 180° |
|-------|--------|--------|--------|--------|--------|--------|--------|--------|--------|--------|--------|
| 0° | 2251.1 | 2251.1 | 2251.1 | 2251.1 | 2251.1 | 2251.1 | 2251.1 | 2251.1 | 2251.1 | 2251.1 | 2251.1 |
| 2.5° | 2059.8 | 2024.4 | 2012.0 | 1994.3 | 1971.2 | 1978.3 | 1946.5 | 1935.8 | 1951.8 | 1973.0 | 1967.7 |
| 5° | 1872.1 | 1833.1 | 1806.5 | 1765.8 | 1758.7 | 1742.8 | 1732.1 | 1718.0 | 1735.7 | 1760.5 | 1765.8 |
| 7.5° | 1723.3 | 1689.6 | 1663.1 | 1650.7 | 1641.8 | 1634.7 | 1613.5 | 1602.9 | 1602.9 | 1613.5 | 1622.3 |
| 10° | 1659.5 | 1634.7 | 1629.4 | 1633.0 | 1647.1 | 1645.4 | 1625.9 | 1611.7 | 1594.0 | 1585.1 | 1595.8 |
| 12.5° | 1748.1 | 1707.4 | 1700.3 | 1702.0 | 1719.7 | 1718.0 | 1696.7 | 1679.0 | 1675.5 | 1679.0 | 1712.7 |
| 15° | 1898.6 | 1836.6 | 1790.6 | 1781.7 | 1790.6 | 1787.1 | 1771.1 | 1760.5 | 1765.8 | 1817.2 | 1873.8 |
| 17.5° | 2033.2 | 1937.6 | 1854.4 | 1822.5 | 1820.7 | 1815.4 | 1799.4 | 1795.9 | 1822.5 | 1918.1 | 2001.4 |
| 20° | 2072.2 | 1978.3 | 1859.7 | 1818.9 | 1810.1 | 1804.8 | 1787.1 | 1792.4 | 1826.0 | 1941.1 | 2012.0 |
| 22.5° | 2020.8 | 1930.5 | 1806.5 | 1765.8 | 1758.7 | 1756.9 | 1739.2 | 1746.3 | 1774.7 | 1875.6 | 1934.1 |
| 25° | 1923.4 | 1847.3 | 1718.0 | 1682.6 | 1682.6 | 1679.0 | 1663.1 | 1666.6 | 1684.3 | 1772.9 | 1829.6 |
| 27.5° | 1804.8 | 1732.1 | 1624.1 | 1588.7 | 1594.0 | 1599.3 | 1579.8 | 1574.5 | 1588.7 | 1671.9 | 1705.6 |
| 30° | 1668.4 | 1617.0 | 1532.0 | 1500.1 | 1498.4 | 1519.6 | 1493.0 | 1486.0 | 1505.4 | 1571.0 | 1578.1 |
| 32.5° | 1535.6 | 1510.8 | 1450.5 | 1425.7 | 1427.5 | 1431.1 | 1416.9 | 1416.9 | 1434.6 | 1470.0 | 1468.3 |
| 35° | 1406.3 | 1390.3 | 1379.7 | 1362.0 | 1360.2 | 1353.1 | 1353.1 | 1356.7 | 1376.2 | 1388.6 | 1365.5 |
| 37.5° | 1282.3 | 1298.2 | 1310.6 | 1292.9 | 1278.7 | 1278.7 | 1278.7 | 1294.7 | 1312.4 | 1307.1 | 1268.1 |
| 40° | 1172.5 | 1206.1 | 1245.1 | 1225.6 | 1192.0 | 1190.2 | 1197.3 | 1223.8 | 1250.4 | 1218.5 | 1183.1 |
| 42.5° | 1078.6 | 1121.1 | 1176.0 | 1165.4 | 1128.2 | 1122.9 | 1128.2 | 1161.8 | 1183.1 | 1142.4 | 1103.4 |
| 45° | 986.5 | 1039.6 | 1105.2 | 1105.2 | 1064.4 | 1059.1 | 1060.9 | 1105.2 | 1117.6 | 1069.8 | 1020.2 |
| 47.5° | 908.6 | 967.0 | 1036.1 | 1036.1 | 1002.4 | 991.8 | 1000.7 | 1046.7 | 1055.6 | 988.3 | 942.2 |
| 50° | 834.2 | 898.0 | 974.1 | 968.8 | 945.8 | 936.9 | 952.9 | 1002.4 | 991.8 | 917.4 | 869.6 |
| 52.5° | 740.3 | 807.6 | 912.1 | 917.4 | 905.0 | 906.8 | 926.3 | 958.2 | 928.1 | 837.7 | 797.0 |
| 55° | 655.3 | 724.4 | 828.9 | 857.2 | 857.2 | 855.4 | 864.3 | 889.1 | 864.3 | 756.3 | 706.7 |
| 57.5° | 563.2 | 621.7 | 708.4 | 715.5 | 720.8 | 701.4 | 713.8 | 747.4 | 735.0 | 642.9 | 614.6 |
| 60° | 462.3 | 511.9 | 561.4 | 566.8 | 543.7 | 503.0 | 526.0 | 565.0 | 573.8 | 504.8 | 472.9 |
| 62.5° | 327.7 | 375.5 | 433.9 | 433.9 | 410.9 | 370.2 | 400.3 | 433.9 | 421.5 | 350.7 | 331.2 |
| 65° | 244.4 | 288.7 | 333.0 | 352.5 | 333.0 | 304.6 | 327.7 | 352.5 | 333.0 | 274.5 | 246.2 |
| 67.5° | 157.6 | 187.7 | 214.3 | 230.2 | 233.8 | 230.2 | 240.9 | 233.8 | 210.8 | 171.8 | 155.9 |
| 70° | 95.6 | 111.6 | 125.7 | 139.9 | 150.5 | 155.9 | 161.2 | 145.2 | 122.2 | 101.0 | 95.6 |
| 72.5° | 69.1 | 83.2 | 95.6 | 106.3 | 118.7 | 122.2 | 122.2 | 111.6 | 90.3 | 70.8 | 65.5 |
| 75° | 47.8 | 60.2 | 70.8 | 77.9 | 88.6 | 92.1 | 92.1 | 83.2 | 67.3 | 51.4 | 46.0 |
| 77.5° | 1.8 | 12.4 | 12.4 | 10.6 | 14.2 | 17.7 | 17.7 | 21.3 | 19.5 | 14.2 | 12.4 |
| 80° | 0.0 | 0.0 | 0.0 | 0.0 | 0.0 | 0.0 | 0.0 | 0.0 | 0.0 | 0.0 | 0.0 |
| 82.5° | 0.0 | 0.0 | 0.0 | 0.0 | 0.0 | 0.0 | 0.0 | 0.0 | 0.0 | 0.0 | 0.0 |
| 85° | 0.0 | 0.0 | 0.0 | 0.0 | 0.0 | 0.0 | 0.0 | 0.0 | 0.0 | 0.0 | 0.0 |
| 87.5° | 0.0 | 0.0 | 0.0 | 0.0 | 0.0 | 0.0 | 0.0 | 0.0 | 0.0 | 0.0 | 0.0 |
| 90° | 0.0 | 0.0 | 0.0 | 0.0 | 0.0 | 0.0 | 0.0 | 0.0 | 0.0 | 0.0 | 0.0 |



REPORT NUMBER: P637874

CATALOG NUMBER: GWS-SA4D-760-U-SLL-W-GRSBK

CANDELA DISTRIBUTION (continued):

| | 185° | 195° | 205° | 215° | 225° | 235° | 245° | 255° | 265° | 270° | 275° |
|-------|--------|--------|--------|--------|--------|--------|--------|--------|--------|---------|---------|
| 0° | 2251.1 | 2251.1 | 2251.1 | 2251.1 | 2251.1 | 2251.1 | 2251.1 | 2251.1 | 2251.1 | 2251.1 | 2251.1 |
| 2.5° | 1978.3 | 2042.1 | 2059.8 | 2125.3 | 2183.8 | 2242.2 | 2313.1 | 2355.6 | 2419.3 | 2463.6 | 2488.4 |
| 5° | 1783.5 | 1836.6 | 1900.4 | 1997.8 | 2098.8 | 2210.3 | 2345.0 | 2461.8 | 2608.8 | 2716.9 | 2752.3 |
| 7.5° | 1641.8 | 1710.9 | 1785.3 | 1907.5 | 2045.6 | 2194.4 | 2383.9 | 2575.2 | 2800.1 | 2947.1 | 3041.0 |
| 10° | 1615.3 | 1686.1 | 1785.3 | 1905.7 | 2050.9 | 2221.0 | 2453.0 | 2700.9 | 2982.6 | 3161.4 | 3267.7 |
| 12.5° | 1742.8 | 1818.9 | 1861.4 | 1916.3 | 2026.2 | 2215.7 | 2513.2 | 2828.5 | 3159.7 | 3354.5 | 3467.8 |
| 15° | 1930.5 | 1997.8 | 1928.7 | 1859.7 | 1930.5 | 2159.0 | 2546.9 | 2934.7 | 3315.5 | 3540.5 | 3657.3 |
| 17.5° | 2059.8 | 2065.1 | 1914.6 | 1767.6 | 1787.1 | 2056.3 | 2559.3 | 3041.0 | 3482.0 | 3717.6 | 3839.8 |
| 20° | 2047.4 | 2004.9 | 1852.6 | 1689.6 | 1629.4 | 1923.4 | 2545.1 | 3134.9 | 3650.3 | 3896.4 | 4016.9 |
| 22.5° | 1951.8 | 1902.2 | 1772.9 | 1613.5 | 1496.6 | 1765.8 | 2520.3 | 3219.9 | 3804.3 | 4084.2 | 4197.5 |
| 25° | 1836.6 | 1783.5 | 1677.2 | 1537.3 | 1411.6 | 1613.5 | 2500.8 | 3336.8 | 3999.2 | 4328.6 | 4417.2 |
| 27.5° | 1702.0 | 1656.0 | 1565.7 | 1464.7 | 1376.2 | 1498.4 | 2495.5 | 3490.9 | 4234.7 | 4626.1 | 4688.1 |
| 30° | 1571.0 | 1528.5 | 1457.6 | 1399.2 | 1362.0 | 1431.1 | 2477.8 | 3655.6 | 4516.3 | 4968.0 | 5035.3 |
| 32.5° | 1445.2 | 1402.7 | 1358.4 | 1349.6 | 1351.4 | 1406.3 | 2417.6 | 3818.5 | 4851.1 | 5463.9 | 5513.5 |
| 35° | 1337.2 | 1287.6 | 1269.9 | 1291.1 | 1330.1 | 1363.8 | 2247.5 | 3953.1 | 5210.6 | 6004.1 | 6044.8 |
| 37.5° | 1234.5 | 1184.9 | 1183.1 | 1234.5 | 1277.0 | 1298.2 | 2047.4 | 4086.0 | 5695.9 | 6553.1 | 6604.5 |
| 40° | 1140.6 | 1091.0 | 1108.7 | 1170.7 | 1204.4 | 1215.0 | 1804.8 | 4287.9 | 6209.5 | 7132.3 | 7103.9 |
| 42.5° | 1060.9 | 1009.5 | 1020.2 | 1099.9 | 1130.0 | 1158.3 | 1581.6 | 4456.1 | 6703.7 | 7681.3 | 7672.5 |
| 45° | 983.0 | 944.0 | 936.9 | 1023.7 | 1050.3 | 1163.6 | 1418.7 | 4585.4 | 7339.5 | 8380.9 | 8395.1 |
| 47.5° | 906.8 | 876.7 | 878.5 | 915.7 | 981.2 | 1190.2 | 1280.5 | 4670.4 | 8262.2 | 9489.6 | 9243.4 |
| 50° | 837.7 | 814.7 | 834.2 | 791.7 | 936.9 | 1156.5 | 1161.8 | 4652.7 | 9293.0 | 10552.3 | 10058.1 |
| 52.5° | 761.6 | 756.3 | 765.1 | 662.4 | 866.1 | 1020.2 | 1050.3 | 4417.2 | 9776.5 | 11278.4 | 10996.8 |
| 55° | 683.6 | 681.9 | 611.0 | 529.6 | 724.4 | 814.7 | 899.7 | 3685.7 | 9760.6 | 11664.5 | 12006.4 |
| 57.5° | 591.6 | 577.4 | 464.0 | 432.2 | 563.2 | 566.8 | 820.0 | 2414.0 | 8650.1 | 10740.0 | 11448.5 |
| 60° | 448.1 | 437.5 | 340.1 | 350.7 | 393.2 | 363.1 | 653.5 | 1202.6 | 6464.6 | 8366.7 | 9165.5 |
| 62.5° | 309.9 | 295.8 | 253.3 | 271.0 | 253.3 | 207.2 | 400.3 | 595.1 | 3915.9 | 5283.2 | 6007.6 |
| 65° | 226.7 | 210.8 | 173.6 | 148.8 | 118.7 | 118.7 | 152.3 | 228.5 | 1516.1 | 2245.8 | 2708.0 |
| 67.5° | 139.9 | 132.8 | 102.7 | 74.4 | 72.6 | 77.9 | 79.7 | 113.4 | 244.4 | 389.6 | 476.4 |
| 70° | 90.3 | 83.2 | 69.1 | 47.8 | 44.3 | 46.0 | 47.8 | 53.1 | 62.0 | 67.3 | 81.5 |
| 72.5° | 62.0 | 58.4 | 49.6 | 26.6 | 21.3 | 23.0 | 24.8 | 24.8 | 30.1 | 28.3 | 33.7 |
| 75° | 44.3 | 40.7 | 35.4 | 12.4 | 7.1 | 8.9 | 10.6 | 8.9 | 10.6 | 7.1 | 8.9 |
| 77.5° | 12.4 | 12.4 | 8.9 | 1.8 | 0.0 | 1.8 | 3.5 | 3.5 | 1.8 | 0.0 | 0.0 |
| 80° | 0.0 | 0.0 | 0.0 | 0.0 | 0.0 | 0.0 | 1.8 | 1.8 | 0.0 | 0.0 | 0.0 |
| 82.5° | 0.0 | 0.0 | 0.0 | 0.0 | 0.0 | 0.0 | 0.0 | 0.0 | 0.0 | 0.0 | 0.0 |
| 85° | 0.0 | 0.0 | 0.0 | 0.0 | 0.0 | 0.0 | 0.0 | 0.0 | 0.0 | 0.0 | 0.0 |
| 87.5° | 0.0 | 0.0 | 0.0 | 0.0 | 0.0 | 0.0 | 0.0 | 0.0 | 0.0 | 0.0 | 0.0 |
| 90° | 0.0 | 0.0 | 0.0 | 0.0 | 0.0 | 0.0 | 0.0 | 0.0 | 0.0 | 0.0 | 0.0 |



REPORT NUMBER: P637874

CATALOG NUMBER: GWS-SA4D-760-U-SLL-W-GRSBK

CANDELA DISTRIBUTION (continued):

| | 285° | 295° | 305° | 315° | 325° | 335° | 345° | 355° | 359° | 360° |
|-------|--------|---------|---------|---------|---------|---------|---------|---------|---------|---------|
| 0° | 2251.1 | 2251.1 | 2251.1 | 2251.1 | 2251.1 | 2251.1 | 2251.1 | 2251.1 | 2251.1 | 2251.1 |
| 2.5° | 2552.2 | 2592.9 | 2608.8 | 2585.8 | 2605.3 | 2573.4 | 2561.0 | 2513.2 | 2509.7 | 2500.8 |
| 5° | 2895.8 | 2987.9 | 3042.8 | 3076.4 | 3037.5 | 2994.9 | 2931.2 | 2821.4 | 2787.7 | 2766.5 |
| 7.5° | 3234.0 | 3377.5 | 3471.4 | 3515.7 | 3505.0 | 3418.2 | 3303.1 | 3118.9 | 3053.4 | 3021.5 |
| 10° | 3528.1 | 3703.4 | 3816.7 | 3871.6 | 3848.6 | 3772.5 | 3607.8 | 3377.5 | 3290.7 | 3271.2 |
| 12.5° | 3733.5 | 3894.7 | 3972.6 | 4020.4 | 4022.2 | 3992.1 | 3836.2 | 3604.2 | 3501.5 | 3476.7 |
| 15° | 3862.8 | 3931.9 | 3933.6 | 3962.0 | 4011.6 | 4078.9 | 4006.3 | 3800.8 | 3691.0 | 3653.8 |
| 17.5° | 3944.3 | 3868.1 | 3790.2 | 3797.3 | 3878.7 | 4057.6 | 4132.0 | 3974.4 | 3857.5 | 3816.7 |
| 20° | 4002.7 | 3761.8 | 3616.6 | 3618.4 | 3701.6 | 3972.6 | 4218.8 | 4142.6 | 4022.2 | 3985.0 |
| 22.5° | 4039.9 | 3668.0 | 3460.8 | 3455.4 | 3544.0 | 3871.6 | 4298.5 | 4342.8 | 4224.1 | 4181.6 |
| 25° | 4116.1 | 3623.7 | 3366.9 | 3397.0 | 3474.9 | 3839.8 | 4406.5 | 4608.4 | 4498.6 | 4441.9 |
| 27.5° | 4252.4 | 3668.0 | 3358.0 | 3427.1 | 3515.7 | 3933.6 | 4594.3 | 4962.7 | 4849.3 | 4785.5 |
| 30° | 4488.0 | 3834.5 | 3494.4 | 3590.0 | 3696.3 | 4179.8 | 4909.5 | 5456.8 | 5293.9 | 5233.6 |
| 32.5° | 4867.0 | 4179.8 | 3915.9 | 4121.4 | 4224.1 | 4583.6 | 5382.4 | 6011.2 | 5878.3 | 5757.9 |
| 35° | 5389.5 | 4968.0 | 4937.9 | 5416.1 | 5391.3 | 5348.8 | 5963.3 | 6691.3 | 6491.1 | 6374.2 |
| 37.5° | 6108.6 | 6236.1 | 6459.2 | 6933.9 | 6918.0 | 6593.8 | 6726.7 | 7334.2 | 7231.4 | 7080.9 |
| 40° | 7006.5 | 7277.5 | 7656.5 | 8336.6 | 8124.1 | 7716.7 | 7663.6 | 7993.0 | 7909.8 | 7732.7 |
| 42.5° | 7536.1 | 8003.7 | 8726.3 | 9337.3 | 9167.3 | 8455.3 | 8395.1 | 8873.3 | 8690.8 | 8497.8 |
| 45° | 7782.3 | 8595.2 | 10012.1 | 10839.2 | 10323.8 | 8945.9 | 8922.9 | 10020.9 | 9918.2 | 9659.6 |
| 47.5° | 7895.6 | 9192.1 | 11517.5 | 12769.7 | 11806.2 | 9376.3 | 9293.0 | 11685.8 | 11551.2 | 11246.6 |
| 50° | 8021.4 | 10015.6 | 13331.2 | 15006.6 | 13596.8 | 9863.3 | 9923.5 | 13237.3 | 13180.6 | 12821.1 |
| 52.5° | 8297.7 | 10887.0 | 15564.5 | 17564.1 | 15768.2 | 10626.7 | 11005.7 | 14700.2 | 14317.7 | 13903.2 |
| 55° | 8712.1 | 11836.3 | 17888.2 | 20176.5 | 17983.9 | 11652.1 | 12176.4 | 15477.7 | 14404.4 | 13945.7 |
| 57.5° | 8253.4 | 12073.7 | 19264.4 | 22000.7 | 18966.8 | 11655.7 | 11186.3 | 14129.9 | 12668.8 | 12224.2 |
| 60° | 6549.6 | 11232.4 | 18734.8 | 21605.8 | 18129.1 | 10350.4 | 8565.1 | 11032.3 | 9597.7 | 9300.1 |
| 62.5° | 4427.8 | 9420.5 | 16492.6 | 18272.6 | 15516.7 | 8141.8 | 5566.6 | 7174.8 | 5942.1 | 5695.9 |
| 65° | 2426.4 | 7027.8 | 13325.8 | 13823.5 | 12144.5 | 5687.0 | 2863.9 | 3113.6 | 2371.5 | 2261.7 |
| 67.5° | 669.5 | 4891.8 | 9804.9 | 9170.8 | 8520.8 | 3703.4 | 740.3 | 556.1 | 396.7 | 393.2 |
| 70° | 168.3 | 3235.8 | 5874.8 | 6055.4 | 5224.8 | 2371.5 | 141.7 | 67.3 | 53.1 | 51.4 |
| 72.5° | 70.8 | 1392.1 | 2787.7 | 3203.9 | 2674.4 | 1098.1 | 51.4 | 19.5 | 15.9 | 12.4 |
| 75° | 8.9 | 111.6 | 237.3 | 359.5 | 246.2 | 118.7 | 0.0 | 0.0 | 0.0 | 0.0 |
| 77.5° | 0.0 | 0.0 | 0.0 | 0.0 | 0.0 | 0.0 | 0.0 | 0.0 | 0.0 | 0.0 |
| 80° | 0.0 | 0.0 | 0.0 | 0.0 | 0.0 | 0.0 | 0.0 | 0.0 | 0.0 | 0.0 |
| 82.5° | 0.0 | 0.0 | 0.0 | 0.0 | 0.0 | 0.0 | 0.0 | 0.0 | 0.0 | 0.0 |
| 85° | 0.0 | 0.0 | 0.0 | 0.0 | 0.0 | 0.0 | 0.0 | 0.0 | 0.0 | 0.0 |
| 87.5° | 0.0 | 0.0 | 0.0 | 0.0 | 0.0 | 0.0 | 0.0 | 0.0 | 0.0 | 0.0 |
| 90° | 0.0 | 0.0 | 0.0 | 0.0 | 0.0 | 0.0 | 0.0 | 0.0 | 0.0 | 0.0 |

Signify Classified - Internal
Cooper Lighting Solutions Photometric Lab
1121 Highway 74 South
Peachtree City, GA 30269



LM-79-2008: Approved Method: Electrical and Photometric Measurements of Solid-
State Lighting Products

Report Prepared for

Cooper Lighting Solutions

McGRAW-EDISON

Report Number: SP1-1908-441-9-R4

Test Date: 10/23/2019

Luminaire Tested: SA1C-760-U-5WQ

Data in this report applies to families of products SA1C-760-U-5WQ .

Test Information

Test Method: LM-79-2008
 Report Number: SP1-1908-441-9-R4
 Test Lab: COOPER LIGHTING SOLUTIONS
 Photometer: SP1 - 76IN SPHERE
 Measurement Geometry: 4π
 Issue Date: 10/28/2024
 Manufacturer: COOPER LIGHTING SOLUTIONS
 Product Line: MCGRAW-EDISON
 Catalog Number: **SA1C-760-U-5WQ**
 Description: MCGRAW EDISON ROADWAY AND AREA LUMINAIRE

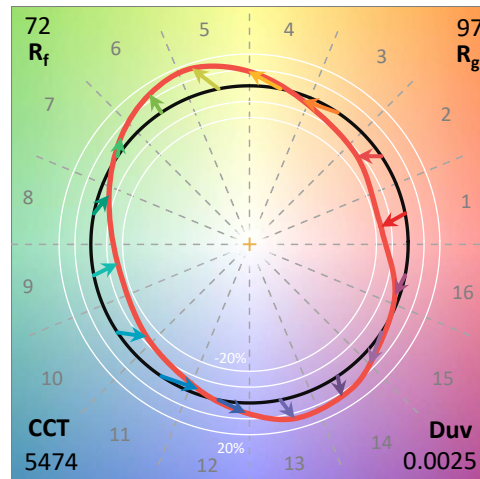
THIS IS A REVISION OF SP1-1908-441-4-R3. TO UPDATE THE CATALOG INFORMATION.TESTED IN SITU. ROADWAY AND AREA LUMINAIRE. (1) 70 CRI, 5000K, 1050MA LIGHTSQUARE WITH 16 LEDS AND TYPE V WIDE OPTICS.

Spectral Parameters

CCT (K): 5474
 CIE u': 0.2052
 CIE v': 0.4804
 Duv: 0.0025
 CIE x: 0.3330
 CIE y: 0.3466
 CIE z: 0.3204
 Peak Wavelength (nm): 442
 Dominant Wavelength (nm): 554
 Purity: 4.1

| | | | |
|-----------|------|------|-------|
| CRI (Ra): | 71.7 | | |
| R1: | 70.6 | R9: | -27.1 |
| R2: | 74.6 | R10: | 40.8 |
| R3: | 78.3 | R11: | 74.6 |
| R4: | 73.8 | R12: | 50.4 |
| R5: | 72.4 | R13: | 70.0 |
| R6: | 67.5 | R14: | 87.8 |
| R7: | 77.5 | | |
| R8: | 58.9 | | |

Rf: 72.1
 Rg: 97.2



Test Conditions

Stabilization Time: 240M
 Operation Time: 12H
 Room Temperature (°C) / RH%: 24.6/31%
 Sphere Temperature (°C): 25.9

REPORT NUMBER: SP1-1908-441-9-R4

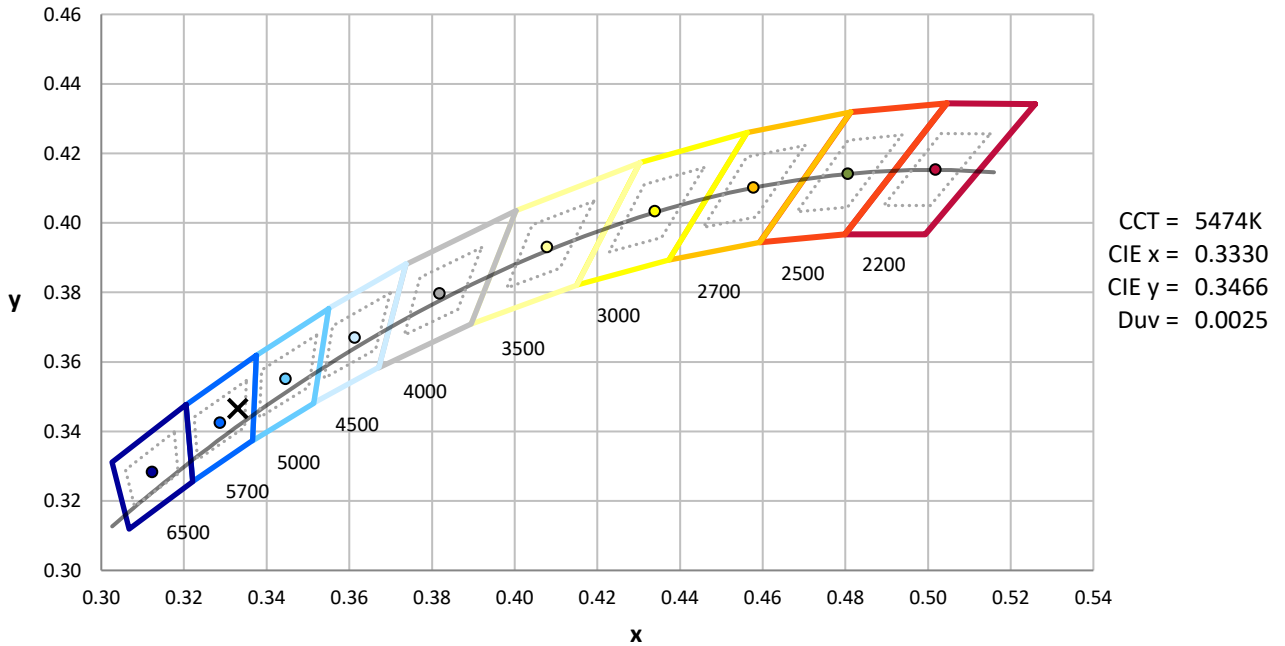
| Measurement and Test Equipment | | | |
|--------------------------------|-----------------------|------------------|----------------------|
| Instrument | Identification Number | Calibration Date | Calibration Due Date |
| Photometer | IN0058 | 6/28/2019 | 12/28/2019 |
| Power Meter | IN0071 | 12/5/2018 | 12/5/2019 |
| AC Power Source | IN0063 | 12/5/2018 | 12/5/2019 |
| DC Power Source | IN0208 | 12/5/2018 | 12/5/2019 |
| Sphere Thermometer | IN0085 | 12/5/2018 | 12/5/2019 |
| Room Thermometer | IN0046 | 12/5/2018 | 12/5/2019 |

REPORT NUMBER: SP1-1908-441-9-R4

CIE 1931 Chromaticity Diagram



CIE 1931 Chromaticity Diagram with 2017 ANSI 7-Step and 4-Step Quadrangles



Point lies inside the ANSI 5700K 4-step quadrangle

REPORT NUMBER: SP1-1908-441-9-R4

Photopic Flux vs. Wavelength



#####

| λ (nm) | Power (µW/nm) | Lumens (φ/nm) | λ (nm) | Power (µW/nm) | Lumens (φ/nm) | λ (nm) | Power (µW/nm) | Lumens (φ/nm) | λ (nm) | Power (µW/nm) | Lumens (φ/nm) | λ (nm) | Power (µW/nm) | Lumens (φ/nm) |
|--------|---------------|---------------|--------|---------------|---------------|--------|---------------|---------------|--------|---------------|---------------|--------|---------------|---------------|
| 360 | 3540 | NR | 490 | 33363 | NR | 620 | 80193 | NR | 750 | 4663 | NR | 880 | 4678 | NR |
| 365 | 2862 | NR | 495 | 44177 | NR | 625 | 73091 | NR | 755 | 4147 | NR | 885 | 4128 | NR |
| 370 | 2865 | NR | 500 | 57019 | NR | 630 | 66269 | NR | 760 | 4040 | NR | 890 | 4504 | NR |
| 375 | 3254 | NR | 505 | 70030 | NR | 635 | 60012 | NR | 765 | 3474 | NR | 895 | 4371 | NR |
| 380 | 3076 | NR | 510 | 81972 | NR | 640 | 53914 | NR | 770 | 3469 | NR | 900 | 4082 | NR |
| 385 | 2904 | NR | 515 | 92590 | NR | 645 | 48385 | NR | 775 | 3181 | NR | 905 | 2982 | NR |
| 390 | 2689 | NR | 520 | 100305 | NR | 650 | 43219 | NR | 780 | 2969 | NR | 910 | 4351 | NR |
| 395 | 2619 | NR | 525 | 107452 | NR | 655 | 38562 | NR | 785 | 3132 | NR | 915 | 3365 | NR |
| 400 | 2679 | NR | 530 | 111373 | NR | 660 | 34110 | NR | 790 | 2507 | NR | 920 | 3430 | NR |
| 405 | 3515 | NR | 535 | 114505 | NR | 665 | 30085 | NR | 795 | 2968 | NR | 925 | 4264 | NR |
| 410 | 6934 | NR | 540 | 116408 | NR | 670 | 26205 | NR | 800 | 2758 | NR | 930 | 4095 | NR |
| 415 | 14943 | NR | 545 | 118700 | NR | 675 | 22906 | NR | 805 | 2872 | NR | 935 | 5048 | NR |
| 420 | 31939 | NR | 550 | 119209 | NR | 680 | 20058 | NR | 810 | 3094 | NR | 940 | 4074 | NR |
| 425 | 64701 | NR | 555 | 120742 | NR | 685 | 17413 | NR | 815 | 3222 | NR | 945 | 4949 | NR |
| 430 | 110939 | NR | 560 | 121594 | NR | 690 | 15447 | NR | 820 | 3238 | NR | 950 | 4387 | NR |
| 435 | 164597 | NR | 565 | 121913 | NR | 695 | 13398 | NR | 825 | 3524 | NR | 955 | 4978 | NR |
| 440 | 207696 | NR | 570 | 122147 | NR | 700 | 11777 | NR | 830 | 2921 | NR | 960 | 4706 | NR |
| 445 | 201830 | NR | 575 | 121605 | NR | 705 | 10412 | NR | 835 | 3595 | NR | 965 | 5083 | NR |
| 450 | 145410 | NR | 580 | 120248 | NR | 710 | 9544 | NR | 840 | 3016 | NR | 970 | 4522 | NR |
| 455 | 89594 | NR | 585 | 117717 | NR | 715 | 8940 | NR | 845 | 4032 | NR | 975 | 4740 | NR |
| 460 | 58321 | NR | 590 | 114359 | NR | 720 | 7897 | NR | 850 | 3579 | NR | 980 | 6122 | NR |
| 465 | 39318 | NR | 595 | 109974 | NR | 725 | 7045 | NR | 855 | 4571 | NR | 985 | 6450 | NR |
| 470 | 27693 | NR | 600 | 105269 | NR | 730 | 6483 | NR | 860 | 4485 | NR | 990 | 4875 | NR |
| 475 | 23081 | NR | 605 | 99453 | NR | 735 | 5838 | NR | 865 | 3978 | NR | 995 | 4764 | NR |
| 480 | 23002 | NR | 610 | 92921 | NR | 740 | 5261 | NR | 870 | 4298 | NR | 1000 | 3640 | NR |
| 485 | 26201 | NR | 615 | 86989 | NR | 745 | 4760 | NR | 875 | 4356 | NR | | | |

REPORT NUMBER: SP1-1908-441-9-R4

Scotopic Flux vs. Wavelength



Scotopic Lumens: 13759.3 S/P: 1.85

| λ (nm) | Power (µW/nm) | Lumens (φ/nm) | λ (nm) | Power (µW/nm) | Lumens (φ/nm) | λ (nm) | Power (µW/nm) | Lumens (φ/nm) | λ (nm) | Power (µW/nm) | Lumens (φ/nm) | λ (nm) | Power (µW/nm) | Lumens (φ/nm) |
|--------|---------------|---------------|--------|---------------|---------------|--------|---------------|---------------|--------|---------------|---------------|--------|---------------|---------------|
| 360 | 3540 | NR | 490 | 33363 | NR | 620 | 80193 | NR | 750 | 4663 | NR | 880 | 4678 | NR |
| 365 | 2862 | NR | 495 | 44177 | NR | 625 | 73091 | NR | 755 | 4147 | NR | 885 | 4128 | NR |
| 370 | 2865 | NR | 500 | 57019 | NR | 630 | 66269 | NR | 760 | 4040 | NR | 890 | 4504 | NR |
| 375 | 3254 | NR | 505 | 70030 | NR | 635 | 60012 | NR | 765 | 3474 | NR | 895 | 4371 | NR |
| 380 | 3076 | NR | 510 | 81972 | NR | 640 | 53914 | NR | 770 | 3469 | NR | 900 | 4082 | NR |
| 385 | 2904 | NR | 515 | 92590 | NR | 645 | 48385 | NR | 775 | 3181 | NR | 905 | 2982 | NR |
| 390 | 2689 | NR | 520 | 100305 | NR | 650 | 43219 | NR | 780 | 2969 | NR | 910 | 4351 | NR |
| 395 | 2619 | NR | 525 | 107452 | NR | 655 | 38562 | NR | 785 | 3132 | NR | 915 | 3365 | NR |
| 400 | 2679 | NR | 530 | 111373 | NR | 660 | 34110 | NR | 790 | 2507 | NR | 920 | 3430 | NR |
| 405 | 3515 | NR | 535 | 114505 | NR | 665 | 30085 | NR | 795 | 2968 | NR | 925 | 4264 | NR |
| 410 | 6934 | NR | 540 | 116408 | NR | 670 | 26205 | NR | 800 | 2758 | NR | 930 | 4095 | NR |
| 415 | 14943 | NR | 545 | 118700 | NR | 675 | 22906 | NR | 805 | 2872 | NR | 935 | 5048 | NR |
| 420 | 31939 | NR | 550 | 119209 | NR | 680 | 20058 | NR | 810 | 3094 | NR | 940 | 4074 | NR |
| 425 | 64701 | NR | 555 | 120742 | NR | 685 | 17413 | NR | 815 | 3222 | NR | 945 | 4949 | NR |
| 430 | 110939 | NR | 560 | 121594 | NR | 690 | 15447 | NR | 820 | 3238 | NR | 950 | 4387 | NR |
| 435 | 164597 | NR | 565 | 121913 | NR | 695 | 13398 | NR | 825 | 3524 | NR | 955 | 4978 | NR |
| 440 | 207696 | NR | 570 | 122147 | NR | 700 | 11777 | NR | 830 | 2921 | NR | 960 | 4706 | NR |
| 445 | 201830 | NR | 575 | 121605 | NR | 705 | 10412 | NR | 835 | 3595 | NR | 965 | 5083 | NR |
| 450 | 145410 | NR | 580 | 120248 | NR | 710 | 9544 | NR | 840 | 3016 | NR | 970 | 4522 | NR |
| 455 | 89594 | NR | 585 | 117717 | NR | 715 | 8940 | NR | 845 | 4032 | NR | 975 | 4740 | NR |
| 460 | 58321 | NR | 590 | 114359 | NR | 720 | 7897 | NR | 850 | 3579 | NR | 980 | 6122 | NR |
| 465 | 39318 | NR | 595 | 109974 | NR | 725 | 7045 | NR | 855 | 4571 | NR | 985 | 6450 | NR |
| 470 | 27693 | NR | 600 | 105269 | NR | 730 | 6483 | NR | 860 | 4485 | NR | 990 | 4875 | NR |
| 475 | 23081 | NR | 605 | 99453 | NR | 735 | 5838 | NR | 865 | 3978 | NR | 995 | 4764 | NR |
| 480 | 23002 | NR | 610 | 92921 | NR | 740 | 5261 | NR | 870 | 4298 | NR | 1000 | 3640 | NR |
| 485 | 26201 | NR | 615 | 86989 | NR | 745 | 4760 | NR | 875 | 4356 | NR | | | |

REPORT NUMBER: SP1-1908-441-9-R4

Melanopic Flux vs. Wavelength



Melanopic Lumens: 5527.6 M/P: 0.74

| λ (nm) | Power (µW/nm) | Lumens (φ/nm) | λ (nm) | Power (µW/nm) | Lumens (φ/nm) | λ (nm) | Power (µW/nm) | Lumens (φ/nm) | λ (nm) | Power (µW/nm) | Lumens (φ/nm) | λ (nm) | Power (µW/nm) | Lumens (φ/nm) |
|--------|---------------|---------------|--------|---------------|---------------|--------|---------------|---------------|--------|---------------|---------------|--------|---------------|---------------|
| 360 | 3540 | NR | 490 | 33363 | NR | 620 | 80193 | NR | 750 | 4663 | NR | 880 | 4678 | NR |
| 365 | 2862 | NR | 495 | 44177 | NR | 625 | 73091 | NR | 755 | 4147 | NR | 885 | 4128 | NR |
| 370 | 2865 | NR | 500 | 57019 | NR | 630 | 66269 | NR | 760 | 4040 | NR | 890 | 4504 | NR |
| 375 | 3254 | NR | 505 | 70030 | NR | 635 | 60012 | NR | 765 | 3474 | NR | 895 | 4371 | NR |
| 380 | 3076 | NR | 510 | 81972 | NR | 640 | 53914 | NR | 770 | 3469 | NR | 900 | 4082 | NR |
| 385 | 2904 | NR | 515 | 92590 | NR | 645 | 48385 | NR | 775 | 3181 | NR | 905 | 2982 | NR |
| 390 | 2689 | NR | 520 | 100305 | NR | 650 | 43219 | NR | 780 | 2969 | NR | 910 | 4351 | NR |
| 395 | 2619 | NR | 525 | 107452 | NR | 655 | 38562 | NR | 785 | 3132 | NR | 915 | 3365 | NR |
| 400 | 2679 | NR | 530 | 111373 | NR | 660 | 34110 | NR | 790 | 2507 | NR | 920 | 3430 | NR |
| 405 | 3515 | NR | 535 | 114505 | NR | 665 | 30085 | NR | 795 | 2968 | NR | 925 | 4264 | NR |
| 410 | 6934 | NR | 540 | 116408 | NR | 670 | 26205 | NR | 800 | 2758 | NR | 930 | 4095 | NR |
| 415 | 14943 | NR | 545 | 118700 | NR | 675 | 22906 | NR | 805 | 2872 | NR | 935 | 5048 | NR |
| 420 | 31939 | NR | 550 | 119209 | NR | 680 | 20058 | NR | 810 | 3094 | NR | 940 | 4074 | NR |
| 425 | 64701 | NR | 555 | 120742 | NR | 685 | 17413 | NR | 815 | 3222 | NR | 945 | 4949 | NR |
| 430 | 110939 | NR | 560 | 121594 | NR | 690 | 15447 | NR | 820 | 3238 | NR | 950 | 4387 | NR |
| 435 | 164597 | NR | 565 | 121913 | NR | 695 | 13398 | NR | 825 | 3524 | NR | 955 | 4978 | NR |
| 440 | 207696 | NR | 570 | 122147 | NR | 700 | 11777 | NR | 830 | 2921 | NR | 960 | 4706 | NR |
| 445 | 201830 | NR | 575 | 121605 | NR | 705 | 10412 | NR | 835 | 3595 | NR | 965 | 5083 | NR |
| 450 | 145410 | NR | 580 | 120248 | NR | 710 | 9544 | NR | 840 | 3016 | NR | 970 | 4522 | NR |
| 455 | 89594 | NR | 585 | 117717 | NR | 715 | 8940 | NR | 845 | 4032 | NR | 975 | 4740 | NR |
| 460 | 58321 | NR | 590 | 114359 | NR | 720 | 7897 | NR | 850 | 3579 | NR | 980 | 6122 | NR |
| 465 | 39318 | NR | 595 | 109974 | NR | 725 | 7045 | NR | 855 | 4571 | NR | 985 | 6450 | NR |
| 470 | 27693 | NR | 600 | 105269 | NR | 730 | 6483 | NR | 860 | 4485 | NR | 990 | 4875 | NR |
| 475 | 23081 | NR | 605 | 99453 | NR | 735 | 5838 | NR | 865 | 3978 | NR | 995 | 4764 | NR |
| 480 | 23002 | NR | 610 | 92921 | NR | 740 | 5261 | NR | 870 | 4298 | NR | 1000 | 3640 | NR |
| 485 | 26201 | NR | 615 | 86989 | NR | 745 | 4760 | NR | 875 | 4356 | NR | | | |

REPORT NUMBER: SP1-1908-441-9-R4

TM-30-18

Summary

$R_f = 72.1$
 $R_g = 97.2$
 CIE $R_a = 71.7$
 $R_g = -27.1$



Color Vector Graphics



REPORT NUMBER: SP1-1908-441-9-R4

TM-30-18

Individual Sample Fidelity Index ($R_{f,i}$)

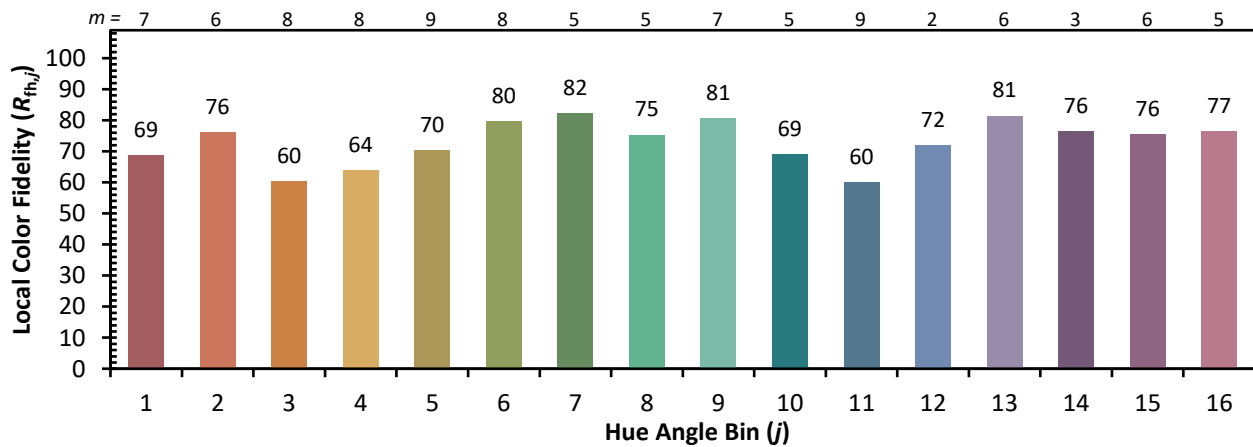
| | | | |
|------------|------------|------------|------------|
| CES01 = 85 | CES26 = 54 | CES51 = 88 | CES76 = 43 |
| CES02 = 59 | CES27 = 79 | CES52 = 90 | CES77 = 64 |
| CES03 = 30 | CES28 = 77 | CES53 = 77 | CES78 = 46 |
| CES04 = 69 | CES29 = 50 | CES54 = 81 | CES79 = 74 |
| CES05 = 46 | CES30 = 59 | CES55 = 80 | CES80 = 70 |
| CES06 = 50 | CES31 = 55 | CES56 = 70 | CES81 = 71 |
| CES07 = 38 | CES32 = 52 | CES57 = 68 | CES82 = 88 |
| CES08 = 38 | CES33 = 63 | CES58 = 70 | CES83 = 82 |
| CES09 = 29 | CES34 = 63 | CES59 = 88 | CES84 = 87 |
| CES10 = 72 | CES35 = 79 | CES60 = 92 | CES85 = 84 |
| CES11 = 55 | CES36 = 90 | CES61 = 88 | CES86 = 76 |
| CES12 = 61 | CES37 = 72 | CES62 = 81 | CES87 = 75 |
| CES13 = 41 | CES38 = 68 | CES63 = 75 | CES88 = 77 |
| CES14 = 74 | CES39 = 91 | CES64 = 72 | CES89 = 76 |
| CES15 = 70 | CES40 = 83 | CES65 = 65 | CES90 = 76 |
| CES16 = 46 | CES41 = 84 | CES66 = 66 | CES91 = 92 |
| CES17 = 48 | CES42 = 70 | CES67 = 64 | CES92 = 70 |
| CES18 = 55 | CES43 = 69 | CES68 = 71 | CES93 = 83 |
| CES19 = 70 | CES44 = 98 | CES69 = 80 | CES94 = 60 |
| CES20 = 64 | CES45 = 79 | CES70 = 58 | CES95 = 73 |
| CES21 = 85 | CES46 = 78 | CES71 = 55 | CES96 = 79 |
| CES22 = 77 | CES47 = 76 | CES72 = 84 | CES97 = 84 |
| CES23 = 91 | CES48 = 68 | CES73 = 47 | CES98 = 73 |
| CES24 = 90 | CES49 = 78 | CES74 = 94 | CES99 = 62 |
| CES25 = 71 | CES50 = 87 | CES75 = 51 | |



REPORT NUMBER: SP1-1908-441-9-R4

TM-30-18

Color Rendition by Hue-Angle Bin



REPORT NUMBER: SP1-1908-441-9-R4

TM-30-18

Measure Comparisons



(END OF REPORT)